



TSS-XP14 2014 RZR XP TURN SIGNAL SYSTEM

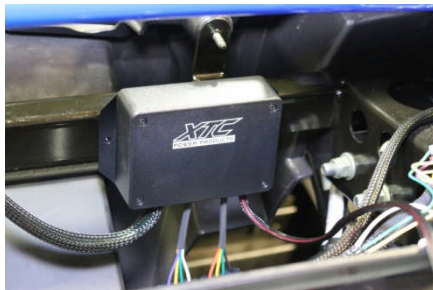
Thank you for purchasing XTC Power Products Turn Signal System. Our new Easy Install Turn System is unique from the other kits on the market. This kit is completely plug and play, no wires to cut, no crimping with only power, ground and plug it into the OEM harness. Like many cars on the road today, our kit uses the factory brake lights as turn indicators.

TSS-XP14 Fits 2014 RZR XP's 2 Seat and 4 seat.

For more details on installation go to www.xtcinstall.com

Please read the instructions fully and familiarize yourself with the components before starting the install.

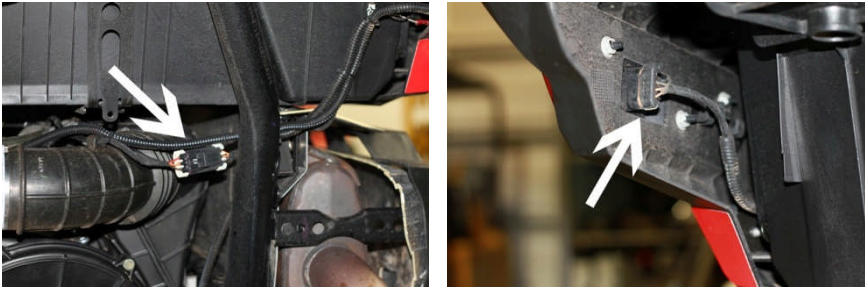
1. **Remove the hood** - and remove two torx screws and remove dash cover.
2. **Mount Control Unit** under dash on the center of cross bar with supplied self tapping screws.



3. **Run Rear Harness** - There are two ways you can run the harness, under skid plate along the brake line OR inside center hump along seat belt anchors by removing the seats and center plastics. Starting from the Rear of the car at the OEM Rear Light Connector, Run the long harness with the single 4 Pin Connector through the center of the car (either way as stated above) up the outside of the firewall through the rubber grommet to the control box and plug in. **Secure cable using the supplied cable tie's making sure to keep the harness away from any Hot or Moving parts.**



4. **Plug rear Harness into OEM Connector** - Unplug wire harness at rear left side and connect our harness, see photo below. (Note: There is a Red and Brown power wire provided for an optional license plate light). Run the rest of the harness to the rear lights, Green goes to right light and Yellow goes to Left. You may leave the factory rear harness in or remove it.

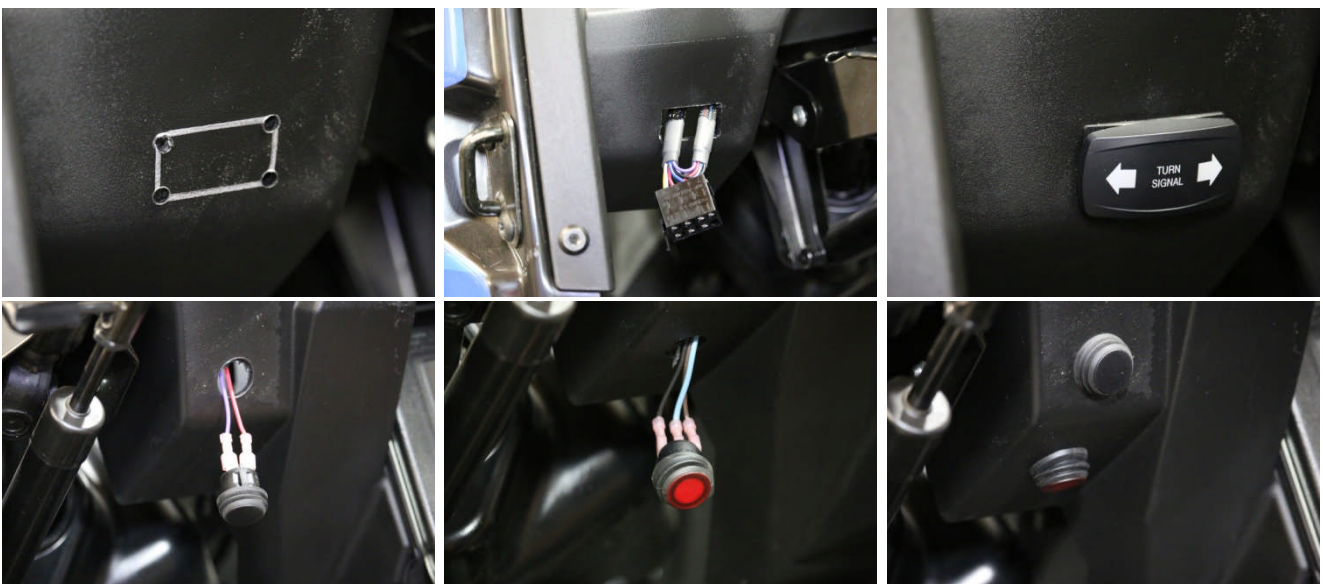


5. Drill $\frac{3}{4}$ " holes in the front corners, remove the rubber grommet from the LED and insert into hole, push LED through grommet. **WARNING! Verify that there is clearance before drilling holes for the LED's.**

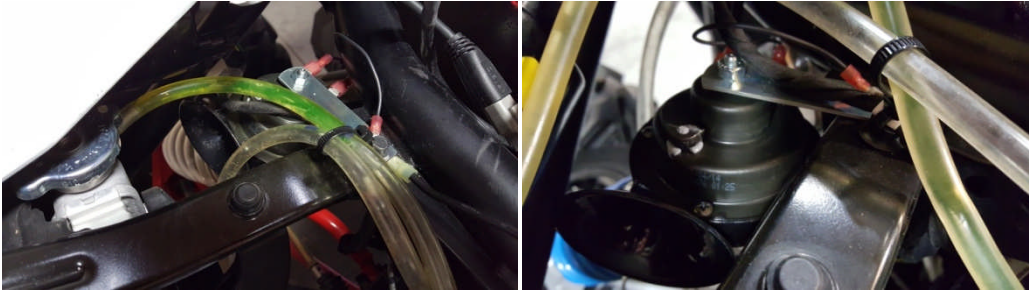


Run the short front harness through rubber grommet to the front right LED. Connect the green wire to the black and the white to white, continue harness to left LED, yellow wire attaches to black wire and the white wire goes to white. NOTE: Black wire is positive and will not work if reversed. White is ground. Secure the Harness using the provided cable ties.

6. **WARNING! Verify that there is clearance behind dash for switch's.** Using the switch housing as a template, mark the rectangle for the switch and drill a hole in each corner, using a sharp box knife cut out the switch. Drill a $\frac{3}{4}$ " hole for the hazard switch, make a notch in the hole for the index. Install the housing, push the switch wires through and attach to switch. Push hazard wires through to switch, **Black wire to top bronze, Blue wire middle, and brown wire bottom.** Mark and drill a $\frac{13}{16}$ " hole in the dash to mount the horn button and attach the red and violet wires to it.

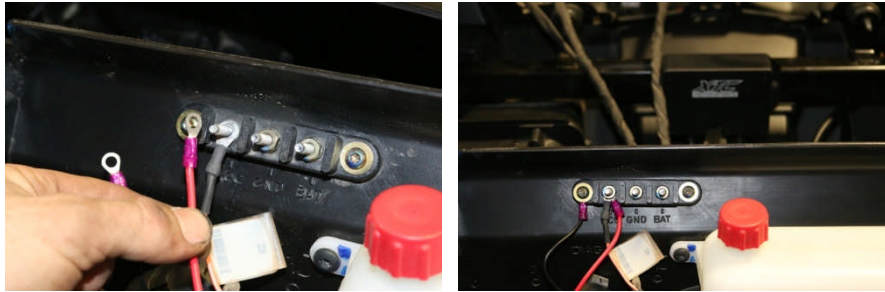


7. Remove the bolt from the radiator support bracket and mount horn and ground wire as shown. Run the purple wire through the grommet on the fire wall and attach to horn.



8. Run power wire to 12vdc accessory stud under the hood and ground the black wire.

(Note: 2015 and 2016 RZR 1000 does not have a ground hooked on any of the studs under the hood – it only offers keyed 12vdc. You must run a ground wire from the chassis to the ground stud or run our black ground wire directly to the chassis ground)



9. Verify operation of all lights.
10. Cable tie any extra harness under dash
11. Reinstall dash cover, hood, center tunnel and seats or skid plates if removed.

For more details on installation go to www.xtcinstall.com
We can also be reached by email at support@xtcpowerproducts.com

XTC Power Products
A Division of XTC Motorsports LLC
925 N McQueen RD. #101
Gilbert AZ 85233
480-558-8588
www.xtcpowerproducts.com

*Disclaimer: This kit is intended for off road use only and XTC Motorsports claims no responsibility for its use. It is up to the purchaser to make sure it complies with all Federal, State and Local laws.