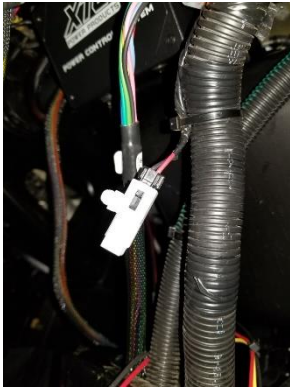




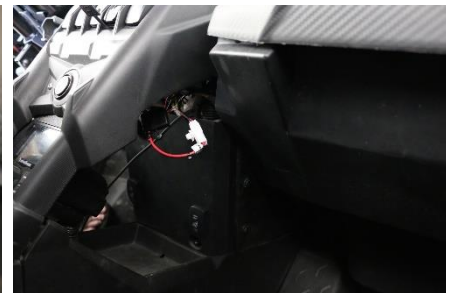
CAN-AM USB Power Port

Thank you for purchasing XTC's Dash mounted USB Power Port. Please read the instructions fully and familiarize yourself with the components before starting the install.

1. Remove the plastic center cover under the dash exposing the main wire harness.
2. Cut the cable tie that holds the AUX Plug to make it simpler to use, the connector maybe in the back of the harness hidden, un-plug the OEM accessory port cover (White Plug) by pushing the center button.
3. Remove one Center Dash Switch plug



4. Slide White Connector with fuse and install USB Port into Switch Cutout
5. Plug the USB Port into the OEM AUX Power Port
6. Re-install center plastic Cover.



For more details on installation go to www.xtcinstall.com

We can also be reached by email at support@powerproducts.com

To purchase Accessories please visit our web site at www.xtcpowerproducts.com

Copyright © 2018 XTC MOTORSPORTS LLC, all rights reserved.

XTC Power Products
A Division of XTC Motorsports LLC
925 N McQueen RD. #101
Gilbert AZ 85233
480-558-8588
www.xtcpowerproducts.com